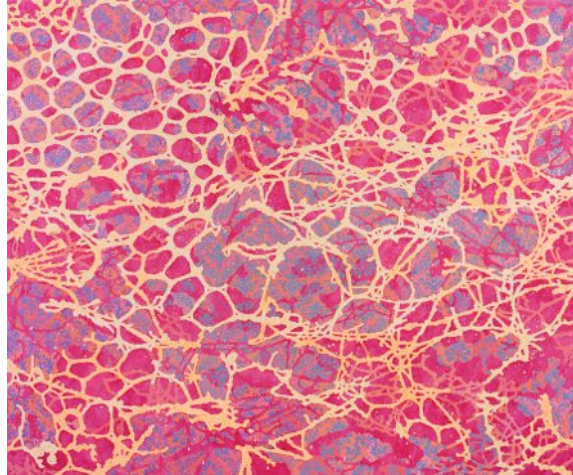


# SHIZARU

MAYFAIR



Artwork: *The Realm of Possibilities*, 2012

Shizaru Gallery Presents:

## **ADAM BALL: IN THE BEGINNING**

29 March - 5 May 2012

Shizaru is delighted to announce *In The Beginning*, a solo exhibition of new works by Adam Ball, representing one year's investigation into the hidden orders of creation. Optimistic and contemplative, Ball illuminates the gallery with his dream-like imagery frozen in time and memory, providing an opportunity to deliberate various themes of creation on a minute and cosmic scale.

The various displayed works aim to echo the hidden order and the transient disposition of nature. The subject matter includes the apparent spiritual silence of the world's oldest tropical rainforest and layered microbiological imagery. There is no hierarchy in the selection of imagery; rather, Ball contrasts the micro and the macro, biological and electrical, chemical and natural, molecular and galactic. Ball's resultant ambiguous 'landscapes' symbolize an experience rather than a time and a place. They are unrecognizably alien, yet instinctively familiar.

*In The Beginning* features a variety of mediums, including hand-crafted paper cut-outs, acetate layering, light boxes and painting, used to develop a mode by which the viewer explores the surface of the works as deeply as their subject matter. Referencing the ancient art of Psalligraphy, Ball's reductive method, seen in his paper works and light boxes, highlights the obscurity of nature and creation.

Meticulous and labour-intensive, his hand-cut paper works are largely rooted in a process of subtraction leaving behind negative space where possibility fits like a puzzle piece. Radiating with silent energy, they reference the past, as well as the infinite expanses of nature.

Informed by concept and process, the works suggest a type of rebirth and regeneration, a new beginning of both source material and content. Concurrent with Shizaru's multi-disciplinary programme, co-founder Benjamin Kahlili is thrilled by the mastery of Ball's technique. "The infinite precision

SHIZARU  
MAYFAIR



displayed in Ball's work is something to be revered, resonating with the viewer through their familiarity of mediums and abruptly contrasted by bright colours, abstract imagery and X-ray like quality."

Carrying biblical and cosmic connotations, *In the Beginning* presents a theme larger than humankind; it references a story that started long before us and will continue long after we are gone. Such methodology complements Ball's manifesto on the endless possibilities of what is hidden within creation. Like rings in a tree, the layers of paint, paper and acetate in Ball's works conceal the true origins of his material process. Leading his viewers onto another plane of consciousness, Ball adds a layer of mystery to his thought-provoking works, whilst inviting the viewers to draw their own conclusions.

## Notes to Editors

### About Shizaru:

Shizaru is a contemporary art gallery focusing on unique visual culture. Launched in 2011 by the Khalili brothers, Shizaru provides a platform for artistic dialogue showcasing dynamic works across fine art, design, sculpture, photography and jewellery, expanding the artistic discourse by offering a multidisciplinary programme. It takes its distinctive name, meaning 'Do No Evil', from the lesser known fourth monkey of 'the Three Wise Monkeys' – See No Evil, Hear No Evil, Speak No Evil. Sons of collector and philanthropist, Professor Nasser D. Khalili, the brothers have used their informed understanding of art and collecting to develop an innovative contemporary exhibition programme. Shizaru will nurture evolving talent with a combination of projects from solo exhibitions to collaborations with guest curators, established artists and new artists. Through building meaningful long-term working relationships the gallery will provide support from conception to creation. In the centre of London's Mayfair, the interior space holds a sense of fantasy and wit, offering a fresh platform to engage with contemporary art. Shizaru is committed to showcasing artists that combine high levels of craftsmanship with equal amounts concept.

### About the artist

Born in 1977, Adam Ball lives and works in London. He rose to critical acclaim in 2002 after displaying a 10-meter high canvas, one of the UK's largest paintings, in London's Golden Square. He has since exhibited in solo and group shows at many international galleries including the Gagosian Gallery, New York; Paul Kasmin, New York; Goss-Michael Foundation, Dallas; The Jerwood Space, London; ICA, London and Galerie Laurent Mueller, Paris. He has collaborated with American fashion designer L'Wren Scott for New York Fashion Week and is currently collaborating with Munich-based porcelain manufacturers Nymphenburg.

### ADAM BALL: *IN THE BEGINNING*

Dates: 29 March – 5 May 2012

Opening Times: Tuesday – Saturday, 10am – 6pm

Location: Shizaru, 112 Mount Street, Mayfair, London, W1K 2TU

Telephone: +44 (0)2074 992 266

Website: [www.shizaru.com](http://www.shizaru.com)

### For press information and images please contact:

Simon Sakhai

Telephone: +44 (0)20 7499 2266

Email: [simon@shizaru.com](mailto:simon@shizaru.com)

SHIZARU  
MAYFAIR

